



**WHITEBOARD MEETINGS/DAILY HUDDLES ASPECT OF THE  
LAST PLANNER® SYSTEM  
(ON THE NCH PROJECT)**

# Presentation Overview

## We were

- Large Traditional Construction Company
- Project Driven Industry

## We are

- Digital Journey
- Developing Process Orientation

## We will be

- Very Large Digital Construction Company
- Process Focused Approach

**We Were**

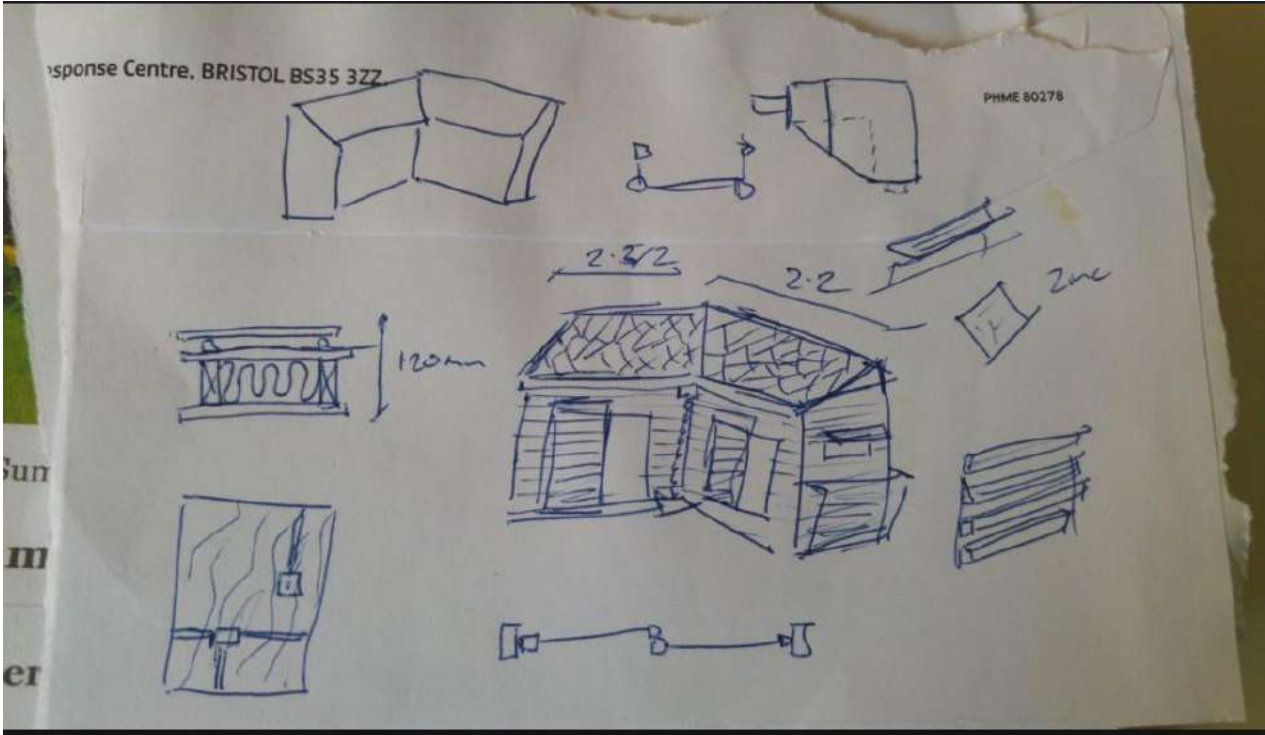
# BAM Group Overview

<b>Name</b>	Bataafsche Aanneming Mij van Bouw-en Betonwerken
<b>Founded</b>	1869
<b>Turnover</b>	€8.0 billion
<b>Employees</b>	23,500
<b>Ownership</b>	Public company, listed on Euronext Amsterdam
<b>Countries</b>	>30 worldwide; five European home markets
<b>Activities</b>	Entire spectrum of construction

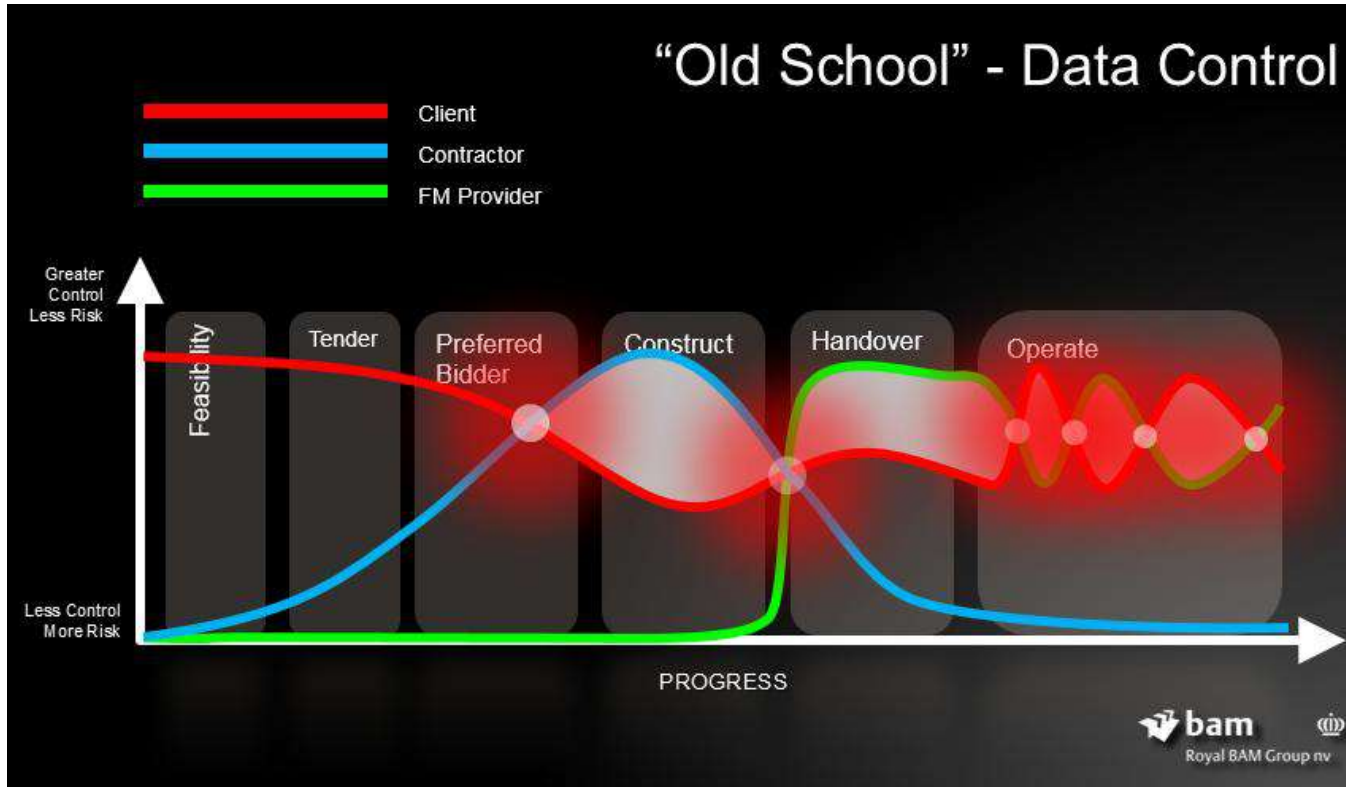


One of the largest and  
foremost European construction businesses

# We Were..

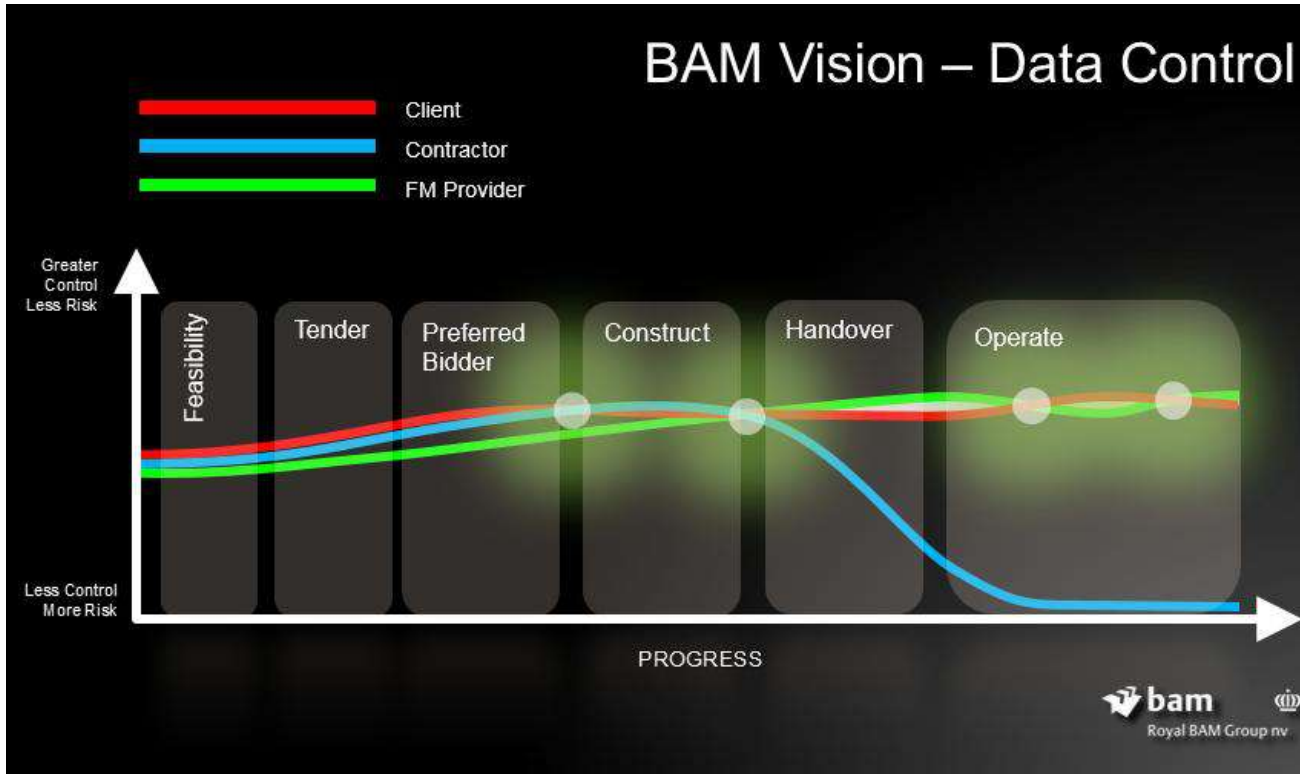


# We Were..



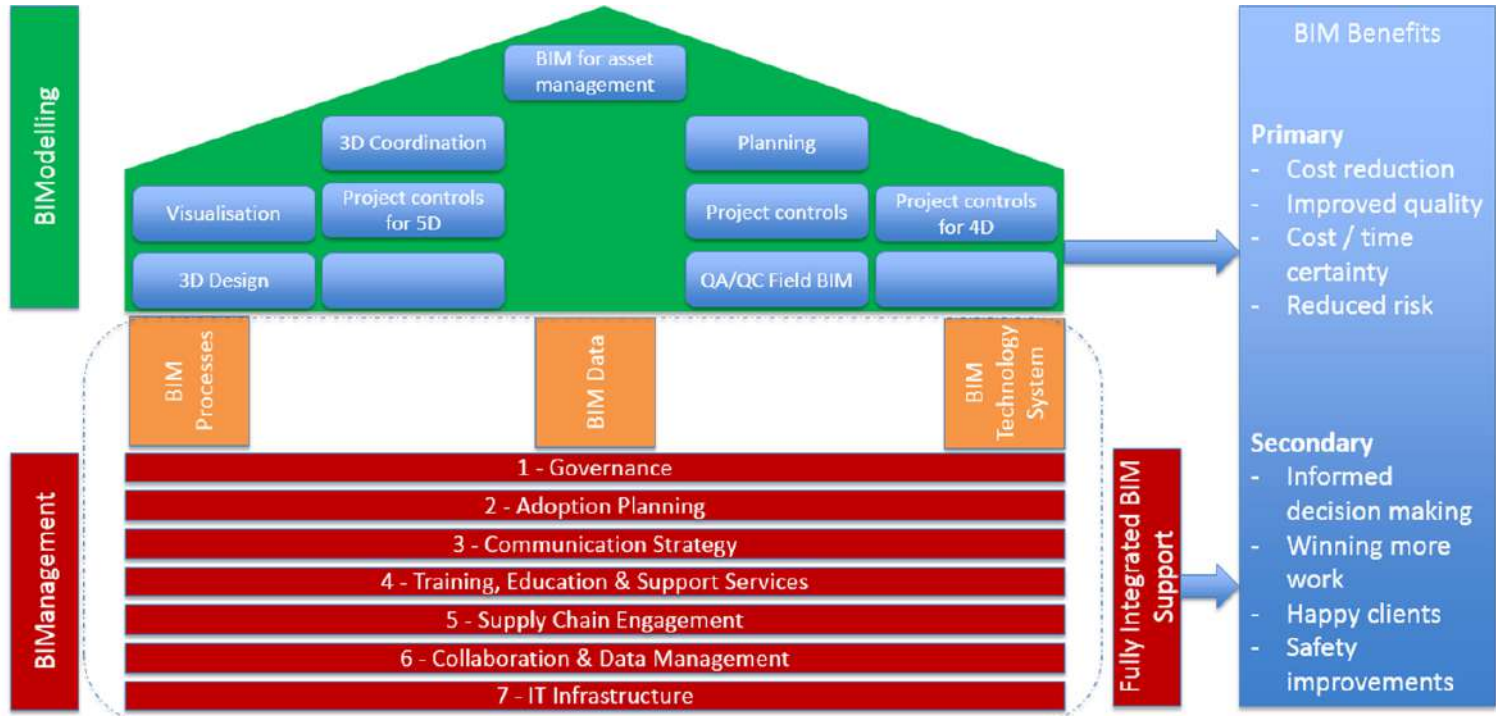
We Are

We Are..





# We Are..



We Are..





We Are..

**SAFETY**

SUD - CONTRACTOR CHECKLISTS

15/12/17

BANKSMEN FOR GRUBS - TEST AFTER XMAS  
 USE OF STRAIGHT LADDERS - TO BE LOCKED + PERMIT  
 1M4 AT QUARTO ENTRANCE  
 ACCESS TO NATU MONITOR @ CAMERON SQ  
 1 MINOR FIRST AID INCIDENT ON 13/12/17 - T8T IN LIFT  
 ISSUE WITH TERRA + MACORA

PERIMETER FENCING/DIVERSION (OVERHEADS)  
 ↳ BY AREA RBT + STEVEN (OVERHEADS)

**ZONE 1**

D506  
 D507

PALMIRA - PREP FOR BASE POUR - STAIR ST-90  
 BARRIX - WATERPROOFING CH 90-110 + 25-50 FACE WALL  
 TERRA START - PIPE JACKING - ON HOLD  
 EXCAVATION - COMPLETE  
 TORNAIS CURVE NEED DEB INSPECTION \*  
 P.C. DEMO 2ND GOING - ARCH PREPARES 18/12  
 EXCEL ENTRY TO D5 SHAPTS TO CHECK LEVELS  
 START DIG - LEVEL 1 BRACIAIT INSTAL -  
 CLEARING OUT P.C. COMPOUND  
 PILE MAT TO MT BROWN  
 CAT A TO M7 + CAT C ENGA CH GOING  
 SJ ACCESS ROAD CONSTRUCTION - BTRAP WOP 19/12  
 PILING TO SCR - PTC

**ZONE 2**

C.P.

M+E

SEWER WORKS FOR NEW OFFICES + DIVERSION TO THE CLINIC  
 NEW OFFICE INSTAL  
 STAIN PIPE @ TIC CORNER  
 10 OF 10 DONE  
 CHP DIVERSION WORKS 2ND GOING - S14 NOT ORDERED  
 FLOW FOR @ FUEL TANK + CORNER  
 FUEL TANK PIPEWORK  
 POCE AT BOTTOM OF MT BROWN (OVERHEADS)  
 ELECTRICAL BOARD @ PRIVATE CLINIC

PLANING NEEDED TO BE REMOVED EARLY JAN 18

DATE	11	12	13	14	15
Up of hours site visit					
183	195	25	66		
At site					
No of sites	0	10	2	10	
17/12					
18/12					
19/12					
20/12					
21/12					
22/12					
23/12					
24/12					
25/12					
26/12					
27/12					
28/12					
29/12					
30/12					
31/12					

SC 18/12  
 SC 19/12  
 AB ORIGINAL  
 FC DUNE  
 TD ?  
 PF 21/12  
 PF 19/12  
 PF 15/12  
 PF 21/12  
 PD 20/12  
 PD/M 20/12  
 PD 21/12  
 PD 12/12

WORKS '3 month look ahead'

We Will Be

We Are..

**SAFETY**

SUD - CONTRACTOR CHECKLISTS

15/12/17

BANKSMEN FOR GRUBS - 10M AFTER XMAS  
USE OF STRAIGHT LADDERS - TO BE LOCKED + PERMIT  
1M4 AT QUARTO ENTRANCE  
ACCESS TO NATU MONITORS @ CAMERON SQ  
MINOR FIRST AID INCIDENT ON 13/12/17 - 181 on UNIT  
ISSUED WITH TERRA + MACROB.

PENINSULA FENCING/PAVEMENT (overrun)  
↳ BY AREA ART + STEVE (overrun)

DATE	11	12	13	14	15
up of hours for work	13	19	25	26	
No of sites	0	10	2	10	
WAE SUBSIDY	63	0	0	0	

- DAY ON 1 PAS

**ZONE1**

- DS06 DS05: PALMIRA - PREP FOR BASE POUR - START 22-90  
BARRIX - WATERPROOFING CH 90-110 + 25-50 FINE WASH  
TERRA START - PIPE JACKING - ON HOLD  
EXCAVATION - COMPLETE  
TORRANS CURVE NEED DEB INSPECTION \*

**DS04**

- P.C. DEMO 2400MM - ARCH PREPARES 18/12  
EXCEL ENTRY TO DS SMARTS TO CHECK LEVELS  
START DIG - LEVEL 1 BRACIANT INSTANT -  
CLEARING OUT P.C. COMPOUND  
PILE MAT TO MT BROWN

**ZONE2**

- CATA TO M7 + CAT C ENGA CH.GONG
- SJ ACCESS ROAD CONSTRUCTION - BROP WED 19/12
- PIPING TO SCR - PCE

**C.P.**

- SEWER WORKS FOR NEW OFFICES + DIVERSION TO THE CHAMBER JC

**M+E**

- NEW OFFICE INSTAU
- STEAM PIPE @ THE CORNER
- 10 OF 10 DONE
- W/D CHECKS
- CHP DIVERSION WORKS ONGOING - SIV NOT OCCURRED
- FLOW FOR @ FUEL TANK + CORRIDOR
- FUEL TANK PIPENETWORK

**\***

- POCC AT BOTTOM OF MT BROWN (OVERHEADS)
- ELECTRICAL BOARD @ PRIVATE CLINIC

DATE	18/12	19/12	20/12	21/12	22/12
ORIGINAL DATE	?				
21/12					
19/12					
15/12					
21/12					
19/12					
15/12					
21/12					
19/12					
15/12					
21/12					
19/12					
15/12					
21/12					

PLANING NEEDED TO BE REMOVED EARLY JAN 18

Works '3 month look ahead'

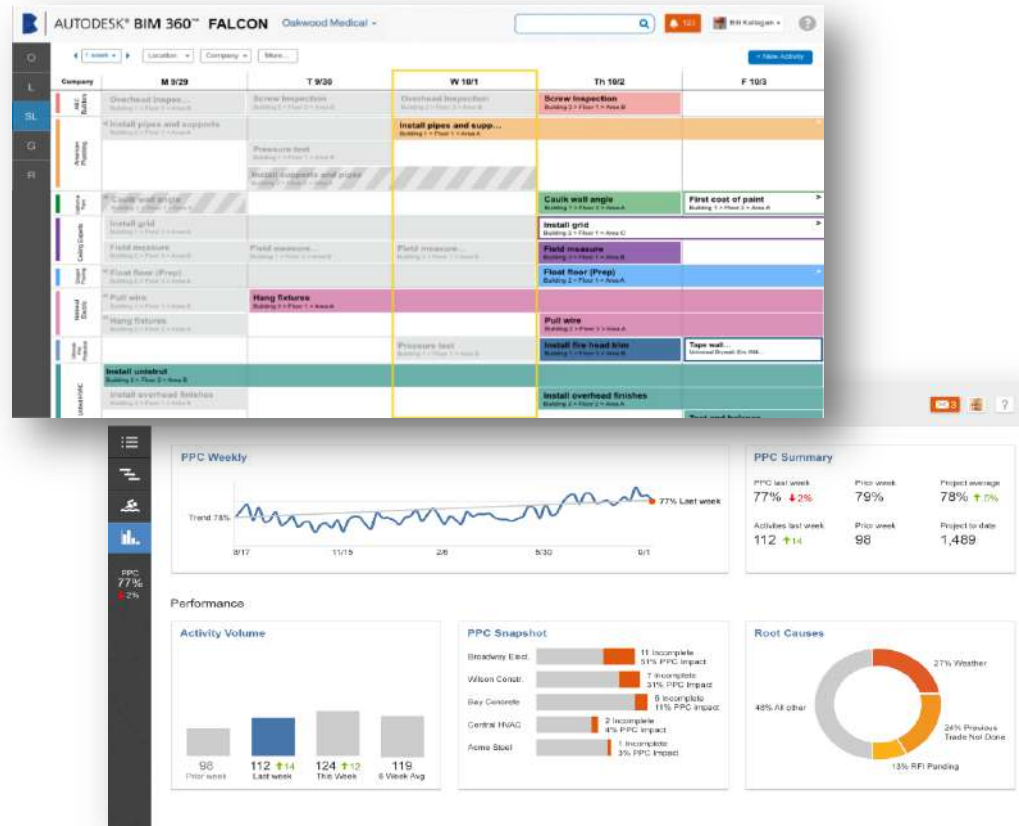




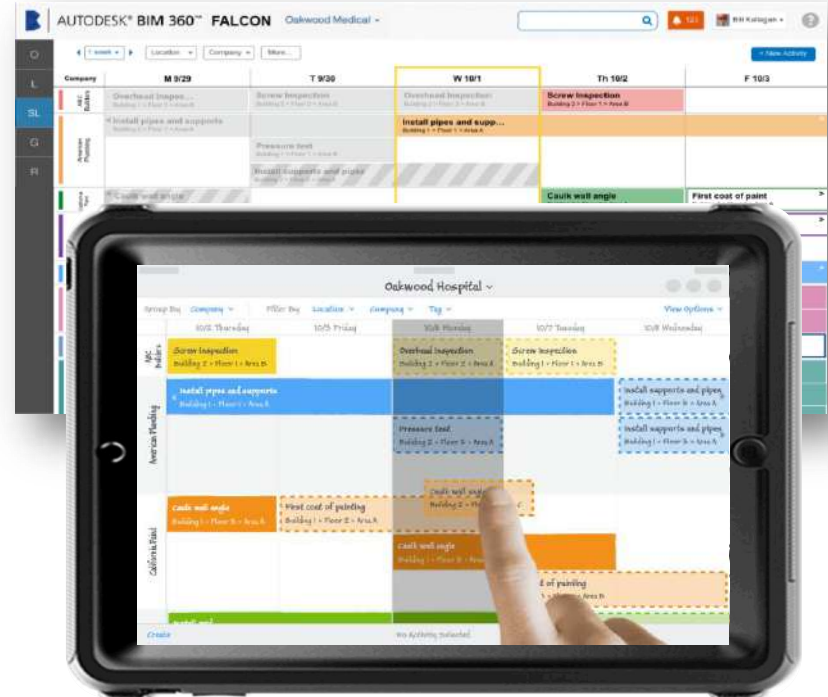


# BIM 360 PLAN

- Cloud Based Pull Planning Software
- Site Driven Micro Schedule
- Collaborative Tool



- Collaborative short-term planning
- Instant updates to the shared plan
- Mobile tracking of commitments
- Built-in performance metrics



# Overview of Lean Construction Ireland

# About LCI

## WHO WE ARE...

Lean Construction Ireland is an all-island, independent, and not-for-profit association whose members passionately believe that Lean Thinking & Practices can enable and sustain enhanced effectiveness, efficiency, productivity, and profitability for the Irish Construction Sector, Clients, and Supply Chain.

## WHAT WE DO...

Lean Construction Ireland leads a community of learning and practice that promotes the application of Lean Thinking & Practices throughout the Irish Architecture, Engineering, Construction (AEC) sector so as to realise value-add for all stakeholders in the value chain. It supports the open exchange of knowledge, information, and experiences around good practices and case studies. It also supports ongoing research into Lean practices nationally and globally, their application to AEC, and their sharing with the wider Lean Construction Ireland Community. It is aligned to LCI USA.

## CORE VALUES...

Collaboration. Leadership. Teamwork. Commitment. Knowledge. Innovation. Integrity.

## VISION...

*Deliver Projects Better, Faster, Together*

## STAKEHOLDERS...

- Public & Private Capital Project Clients & Owners.
- AEC Supply Chain.
- AEC Representative Bodies & Agencies.
- AEC Professional Bodies.
- AEC Academics.
- Lean Construction Trainers & Consultants.
- Lean Business Ireland.
- Ireland Inc.

## OBJECTIVES...

To achieve this Vision Lean Construction Ireland will:

- Promote the application of Lean Thinking & Practices in the Irish AEC sector.
- Develop a national network of members committed to the application of Lean Thinking & Practices.
- Challenge the status quo of current project thinking and delivery methods.
- Advance amongst all stakeholders the business case for Lean Construction knowledge and skills.

# Contact LCI



[WWW.LEANCONSTRUCTIONIRELAND.IE](http://WWW.LEANCONSTRUCTIONIRELAND.IE)



[WWW.LINKEDIN.COM/GROUPS/4332330](http://WWW.LINKEDIN.COM/GROUPS/4332330)



[WWW.FACEBOOK.COM/LEANCONSTRUCTIONIRELAND](http://WWW.FACEBOOK.COM/LEANCONSTRUCTIONIRELAND)



[TWITTER.COM/LCI\\_IRELAND](https://TWITTER.COM/LCI_IRELAND)



[INFO@LEANCONSTRUCTIONIRELAND.IE](mailto:INFO@LEANCONSTRUCTIONIRELAND.IE)